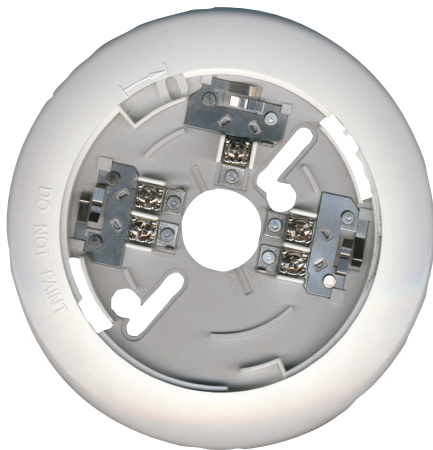


# D7050-B6 Two-wire Detector Base

www.boschsecurity.com



**BOSCH**  
Invented for life



- ▶ Connects to multiplex bus of the FPD-7024 or D7024 Addressable FACP, DS7400Xi Control Panel, and G Series Control Panels
- ▶ Detector's head is easily removed by twisting
- ▶ Two-piece detector system head and base design allows pre-wiring the system

The D7050-B6 is the required base for the D7050 Multiplex Photoelectric Smoke Detector Head and the D7050TH Multiplex Photoelectric Smoke Heat Detector Head. It connects to the multiplex bus of the FPD-7024 or D7024 Addressable Fire Alarm Control Panels (FACPs), the DS7400Xi Control Panel, and the G Series Control Panels.



**Notice**

All versions of the FPD-7024 require a D7039 MUX Expansion Module. The D7024 FACP requires a D7039 MUX Expansion Module and control panel ROM version 2.0 or higher.

### Certifications and approvals

Region	Certification	
USA	UL	UROX: Smoke-automatic Fire Detectors (ANSI/UL 268)
	FM	D7050-B6
	CSFM	see our website
	FDNY-CoA	#6173

### Installation/configuration notes

**Compatible Products**

The following products are compatible with the D7050-B6 detector base:

Category	Product ID	Product Description
Control Panels	FPD-7024	FACP
	D7024	FACP
	D7024-EXP	FACP for export
Detectors	G Series	D9412G (or later), D7412G (or later), and D7212G <sup>1</sup> (or later)
	D7050	Multiplex photoelectric smoke detector
Remote Annunciators	D7050TH	Multiplex photoelectric smoke detector with 135°F (57°C) heat sensor
	DRA-12/24	12 VDC and 24 VDC remote annunciator
Interface Modules	D8125MUX	Multiplex bus interface module

<sup>1</sup> The D7212G models are not UL Listed for commercial fire.

**Mounting Considerations**

The D7050-B6 Base can be mounted on a four-inch square, a four-inch octagonal, or a single-gang box. It can also be surface mounted with anchors, mollies, or wing nuts.

**Number of Devices Allowed on Loop**

The number of multiplex smoke or smoke-heat detectors allowed on the multiplex bus is determined by the wire gauge and the total wire length of the bus. Do not exceed 30 Ω maximum line resistance. For multiplex bus wiring requirements, see the *D7039 Installation Guide*.

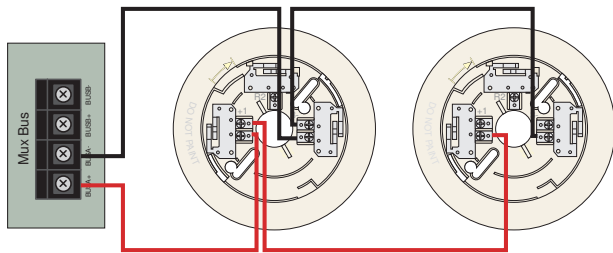
**Wiring Connection to D7024 MUX bus through D7039**



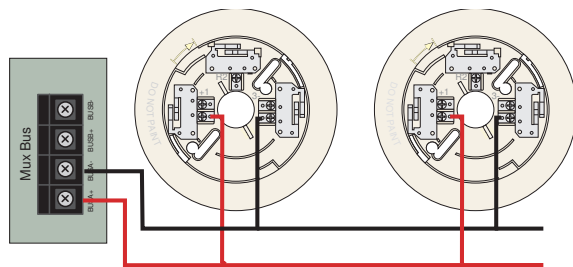
**Notice**

Do not use shielded cable.

The D7050-B6 bases can be wired in a series or using the T-tap method. See the following illustrations.



*Series Connection*



*T-tap Connection*

**Parts included**

Quant.	Component
1	Detector base
1	Hardware pack
1	Literature pack

**Technical specifications**

**Environmental Considerations**

Relative Humidity:	0% to 93% non-condensing
Temperature (Operating):	+32°F to +100°F (0°C to +38°C)

**Mechanical Properties**

Color:	Off-white
Material:	High-impact, fire-retardant polymer plastic

**Ordering information**

**D7050-B6 Two-wire Detector Base**

Required base for the D7050 Multiplex Photoelectric Smoke Detector Head and the D7050TH Multiplex Photoelectric Smoke Heat Detector Head  
Order number **D7050-B6**

**Represented by:**

**Americas:**

Bosch Security Systems, Inc.  
130 Perinton Parkway  
Fairport, New York, 14450, USA  
Phone: +1 800 289 0096  
Fax: +1 585 223 9180  
security.sales@us.bosch.com  
www.boschsecurity.us

**Europe, Middle East, Africa:**

Bosch Security Systems B.V.  
P.O. Box 80002  
5617 BA Eindhoven, The Netherlands  
Phone: + 31 40 2577 284  
Fax: +31 40 2577 330  
emea.securitysystems@bosch.com  
www.boschsecurity.com

**Asia-Pacific:**

Robert Bosch (SEA) Pte Ltd, Security  
Systems  
11 Bishan Street 21  
Singapore 573943  
Phone: +65 6571 2808  
Fax: +65 6571 2699  
apr.securitysystems@bosch.com  
www.boschsecurity.asia

**China:**

Bosch (Shanghai) Security Systems Ltd.  
201 Building, No. 333 Fuquan Road  
North IBP  
Changning District, Shanghai  
200335 China  
Phone +86 21 22181111  
Fax: +86 21 22182398  
www.boschsecurity.com.cn

**America Latina:**

Robert Bosch Ltda Security Systems Division  
Via Anhanguera, Km 98  
CEP 13065-900  
Campinas, Sao Paulo, Brazil  
Phone: +55 19 2103 2860  
Fax: +55 19 2103 2862  
latam.boschsecurity@bosch.com  
www.boschsecurity.com